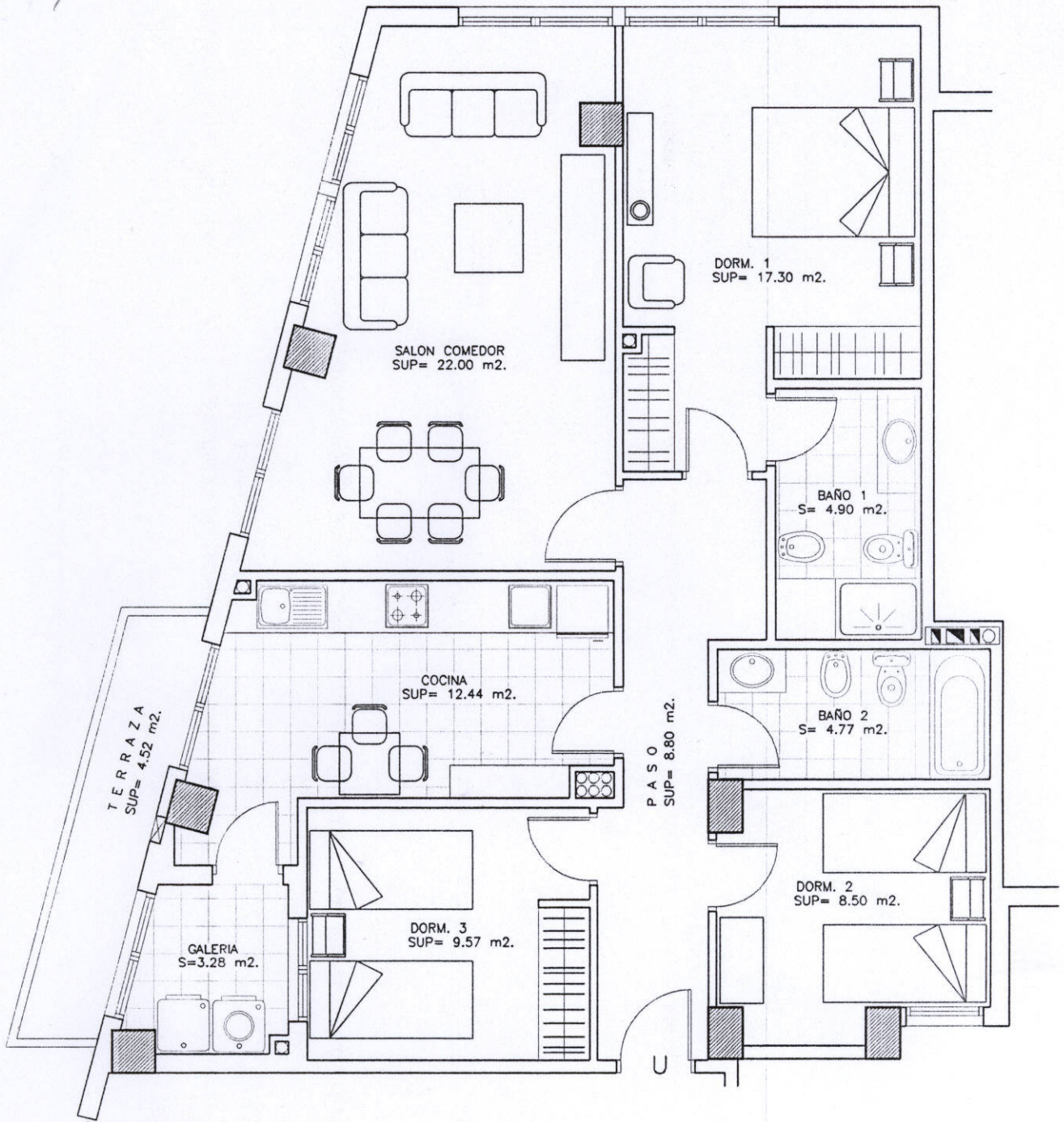


3



EDIFICIO "DAMA IV"

BLOQUE 2

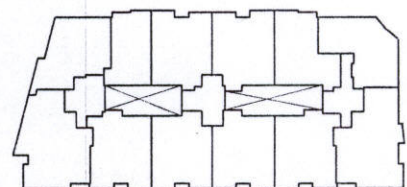
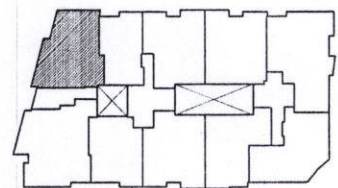
VIVIENDA TIPO "U" PISO _____

SUPERFICIE UTIL = 96.08 m².

SUPERFICIE CONSTRUIDA = 108.18 m².

ZONAS COMUNES = 19.32 m².

SUPERFICIE CONSTRUIDA TOTAL = 127.50 m².



ESCALA 1:50